



way | miX

eXperienced in esthetics

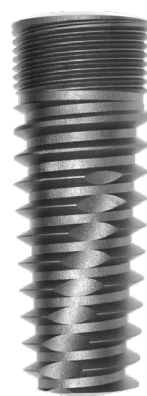




Ten years have passed since the launch of way line and the path towards **excellence** continues, in line with what Geass always offers to its clinicians.

The clinical **evidence** of the users, the confrontation with our opinion **leaders** and the hints provided by new **clinical orientations** have been deeply analysed to plan the new **way implant**.

way Milano
2008

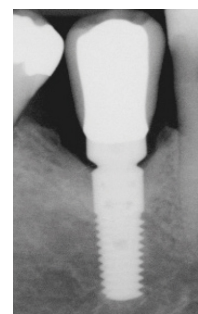
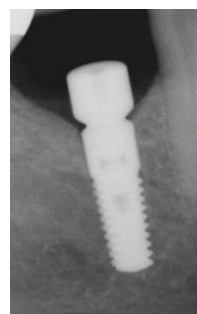


way Mix
2020

The result is **way Mix**, which maintains the same surgical protocol of way Milano, but differs in:

- optimised threads and microthreads to guarantee **greater stability**;
- longitudinal millings to make the insertion **more effective**;
- unique connection to manage the restoration **more easily**;
- length 6,5 mm to offer **more treatment options**.

Way Mix is the implant line able to answer to the **contemporary clinical needs**, maintaining the principles of **safety** and **reliability**, towards a precise objective: an **excellent esthetic result**, which guarantees the **patient** satisfaction and well-being.



Courtesy of dr. Blasone - Udine





Perfect combination of experience and innovation

Evolution of over a decade of way **experience**, way Mix acts on the key factors to obtain the best **esthetic result**:

- 1 maintenance of bone levels
- 2 effective conditioning of the soft tissues
- 3 creation of an esthetically guided restoration

Advantages

Designed to obtain **excellent, long lasting esthetic-functional results**, way Mix is the implant which can satisfy the highest **expectations of the patients**, in terms of esthetics.



1 Maintenance of bone levels

Platform switching

Allows the mucosa to create a seal which maintains the **biological width** and reduces peri-implant bone resorption.

Microthread

Maintains the bone levels by **stimulating the tissues** in the coronal area.

Internal conical connection with a hexagonal base

Reduces **bacterial infiltration** and **makes** the implant to abutment connection stable.

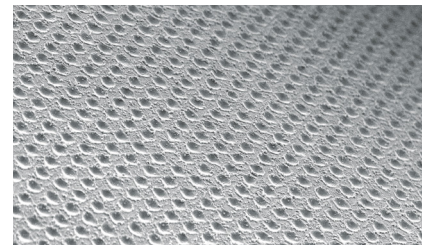
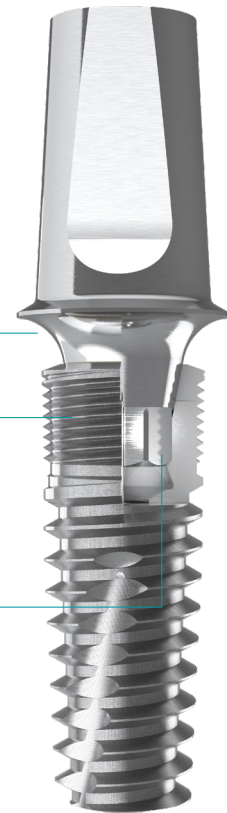
Synthegra surface

The **laser surface**, **patented** by Geass, favours a **long term osseointegration**, as:

- it **obstacles bacterial adhesion**, thanks to extremely smooth niches;
- it **promotes osseointegration** like the rough surfaces, thanks to a strong contact osteogenesis.

Wide range

The lengths by each millimeter allow to take advantage of all the available bone height, thus maximizing **bone-implant contact** and guaranteeing the **stability** of tissues over time.



Ø	lengths							
3.4			9	10	11	12	13	15
3.8	6.5	8	9	10	11	12	13	15
4.5	6.5	8	9	10	11	12	13	15

new

2 Effective conditioning of the soft tissues

Concave profile

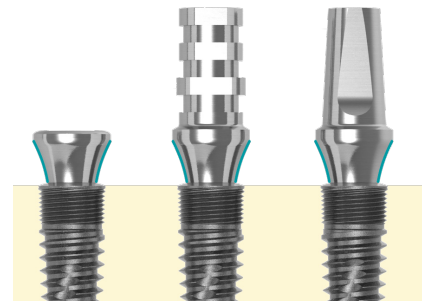
It leaves space for the soft tissues, avoiding any peri-implant compression, so promoting the healing processes. The gingiva can express its full **potential for remodeling and growth**.

The several heights available make it possible to suitably exploit the **different gingival thicknesses**, thus conditioning them effectively for optimal esthetics.



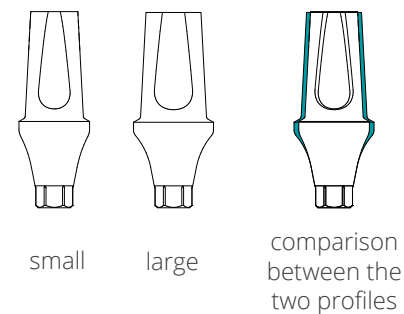
Constant profile

For the **maintenance of the esthetic profile** developed during the healing period, the emerging profile is **replicated by the components** used over the entire treatment, from the initial phases to the definitive abutment.



One connection, two profiles for restoration

Thanks to the two profiles Small and Large, characterized by the same connection, but with **different morphologies**, the clinician can choose the abutment, which best reproduces the characteristics of the natural element, for an excellent **prosthetic restoration**.



3 An esthetically guided restoration

Complete solutions

Way Mix offers a **wide range** of standard prosthetic components, which allows to **satisfy all the needs regarding** the rehabilitation of single elements, small bridges or structures, through cemented or screw-retained solutions.



CAD-CAM customized prosthesis

For those seeking an excellent implant-prosthetic rehabilitation of esthetic and functional value, the customized abutments allow to obtain **better results** in terms of correct management of soft tissues, excellent emerging profile and suitability of closure.

For CAD-CAM production on metals, Geass uses **Performa**, a **unique technology** which integrates the **advantages of milling** for the anatomical part, **with those of machining**, used to achieve precise and repeatable implant connections.

Several solutions in various kind of zirconia, PMMA and laser melting complete the Performa offer.



Integrated digital workflow

The digital technologies can facilitate the Professional in the **restoration-guided clinical approach**.

In order to allow the clinicians and technicians to develop **efficient and integrated digital workflows**, besides consolidated **guided surgery** solutions, Geass offers a wide range of **scanbodies** and **digital analogues**, complete of **libraries** and available in the main Cad modelling softwares.

With way Mix, it is therefore possible to take **intraoral impressions** on implants, to perform directly the **digital modelling** of the restoration or to plan and produce 3D models, with the housing for the analogues.



Bibliography

- De Tullio I, Berardini M, Di Iorio D, Perfetti F, Perfetti G. Comparative evaluation among laser treated, machined and sandblasted/acid etched implant surfaces. An in vivo histologic analysis on sheep. *International Journal of Implant Dentistry* accepted dic 2019
- Sinjari B, Traini T, Caputi S, Mortellaro C, Scarano A. Evaluation of fibrin clot attachment on titanium laser conditioned surface using scanning electron microscopy. *Journal of Craniofacial Surgery*, 2018 Nov;29(8):2277-2281.
- Ionescu AC, Brambilla E, Azzola F, Ottobelli M, Pellegrini G, Francetti LA. Laser microtextured titanium implant surfaces reduce in vitro and in situ oral biofilm formation. *PLoS One*, 2018 Sep 7; 13(9):e0202262.
- Falco A, Berardini M, Trisi P. Correlation between implant geometry, implant surface, insertion torque and primary stability: in vitro biomechanical analysis. *Int J Oral Maxillofac Implants*, 2018 Jul/Aug;33(4):824-830.
- Trisi P, Berardini M, Colagiovanni M, Berardi D, Perfetti G. Laser-treated titanium implants: an in vivo histomorphometric and biomechanical analysis. *Implant Dentistry*, 2016 Oct;25(5):575-80.
- Drago L, Bortolin M, De Vecchi E, Agrappi S, Weinstein RL, Mattina R, Francetti L. Antibiofilm activity of sandblasted and laser-modified titanium against microorganisms isolated from peri-implantitis lesions. *Journal of Chemotherapy*, 2016 Oct;28(5):383-9.
- Di Giulio M, Traini T, Sinjari B, Nostro A, Caputi S, Cellini L. *Porphyromonas gingivalis* biofilm formation in different titanium surfaces, an in vitro study. *Clinical Oral Implant Research*, 2016 Jul;27(7):918-25.
- Cei S, Karapetsa D, Aleo E, Graziani F. Protein adsorption on a laser-modified titanium implant surface. *Implant Dentistry*, 2015 Apr;24(2):134-41.
- Drago L, Pellegrini G, Francetti L. Evaluation of antibiofilm activity on different Geass titanium surfaces by means of crystal violet assay. Poster Scientifico EAO Roma, 2014
- Felice P, Barausse C, Blasone R, Favaretto G, Stacchi C, Calvo M, Marin C, Esposito M. A comparison of two dental implant systems in partially edentulous patients: 1-year post-loading results from a pragmatic multicentre randomised controlled trial. *EJOI* 2014;7(4):397-409.
- Felice P, Pistilli R, Piattelli M, Soardi E, Barausse C, Esposito M. 1 stage versus 2 stage lateral sinus lift procedures: 1 year post-loading results of a multicentre randomised controlled trial. *Eur J Oral Implantol* 2014;7(1):65-75
- Esposito M, Blasone R, Favaretto G, Stacchi C, Calvo M, Marin C, Felice P. A comparison of two dental implant systems in partially edentulous patients: 4 -month post-loading results from a pragmatic multicenter randomised controlled trial. *Eur J Oral Implantol*. 2013 Summer;6(2):169-79.
- Felice P, Pistilli R, Piattelli M, Soardi E, Pellegrino G, Corvino V, Esposito M. 1-stage versus 2-stage lateral maxillary sinus lift procedures: 4-month post-loading results of a multicenter randomised controlled trial. *Eur J Oral Implantol*. 2013 Summer;6(2):153-65.
- Moraes EJ, Rao Genovese F. Comparison between immediate and delayed laser surface implants with switching platform: a clinical retrospective study. *J Oral Implantol*. 2013 Jun;39(3):333-8.
- Duvina M, Barbato L, Buti J, Delle Rose G, Brancato L, Casella G, Longoni S, Sartori M, Amunni F, Tonelli P. Immediate loading with LASER-treated surface implant: two-year resonance frequency analysis follow-up. *J Craniofac Surg*. 2013 May;24(3):849-55.
- Mongardini C. La gestione del paziente parodontale nella riabilitazione implanto-protetica. Percorso clinico-terapeutico e scelta dei materiali per ridurre le complicanze. *Quintessenza Internazionale & International Journal of Oral & Maxillofacial Implants*, 2013;29:1bis:5-14.
- Leonida A, Redondo J, Todeschini G, Rossi G, Paiusco A, Baldoni M. Valutazione del grado di differenziamento in senso osteoblastico delle cellule staminali mesenchimali umane su una superficie in titanio modificata al laser. *Quintessenza Internazionale & International Journal of Oral & Maxillofacial Implants*, 2013;29:1bis:23-28.
- Blasone R. Riabilitazioni totali fisse su 4 impianti: serie di casi clinici. *Quintessenza Internazionale & International Journal of Oral & Maxillofacial Implants*, 2013;29:1bis:35-39.
- Pelagalli P. Caso clinico di atrofia ossea orizzontale mandibolare trattata con approccio flapless. *Quintessenza Internazionale & International Journal of Oral & Maxillofacial Implants*, 2013;29:1bis:89-94.
- Sinjari B, Guarnieri S, Diomede F, Merciaro I, Mariggio MA, Caputi S, Trubiani O. Influence of titanium laser surface geometry on proliferation and on morphological features of human mandibular primary osteoblasts. *J Biol Regul Homeost Agents*. 2012 Jul-Sep;26(3):505-13.
- Blasone R. Riabilitazione totale fissa su 4 impianti a carico immediato. *Dental Academy* 2012, feb.
- Leonida A, Vescovi P, Baldoni M, Rossi G, Lauritano D. Immediate loading in mandible full-arch: pilot study in patients with osteoporosis in bisphosphonate therapy. *J Oral Implantol*. 2012 Feb;38(1):85-94. Epub 2010 Jun 16.
- Berardi D, De Benedittis S, Scoccia A, Perfetti G, Conti P. New laser-treated implant surfaces: A histologic and histomorphometric pilot study in rabbits. *Clin Invest Med*. 2011 Aug 1;34(4):E202.
- Cei S, Legitimo A, Barachini S, Consolini R, Sammartino G, Mattii L, Gabriele M, Graziani F. Effect of Laser Micromachining of Titanium on Viability and Responsiveness of Osteoblast-Like Cells. *Implant Dent*. 2011 Aug;20(4):285-91.
- Esposito M, Piattelli M, Pistilli R, Pellegrino G, Felice P. Sinus lift with guided bone regeneration or anorganic bovine bone: 1-year post-loading results of a pilot randomised clinical trial. *Eur J Oral Implantol*. 2010 Winter;3(4):297-305.
- Berardi D, De Benedittis S, Polimeni A, Malagola C, Cassinelli C, Perfetti G. In vitro evaluation of the efficacy of a new laser surface implant: cellular adhesion and alkaline phosphatase production tests. *Int. J. Immunop. Pharm*. 2009; 1;125-131.
- Felice P, Scarano A, Pistilli R, Checchi L, Piattelli M, Pellegrino G, Esposito M. A comparison of two techniques to augment maxillary sinuses using the lateral window approach: rigid synthetic resorbable barriers versus anorganic bovine bone. Five-month post-loading clinical and histological results of a pilot randomised controlled clinical trial. *Eur J Oral Implantol*. 2009 Winter;2(4):293-306.

Geass srl

Via Madonna della Salute, 23
33050 Pozzuolo del Friuli (UD) - I
tel +39 0432 669191 info@geass.it
www.geass.it

