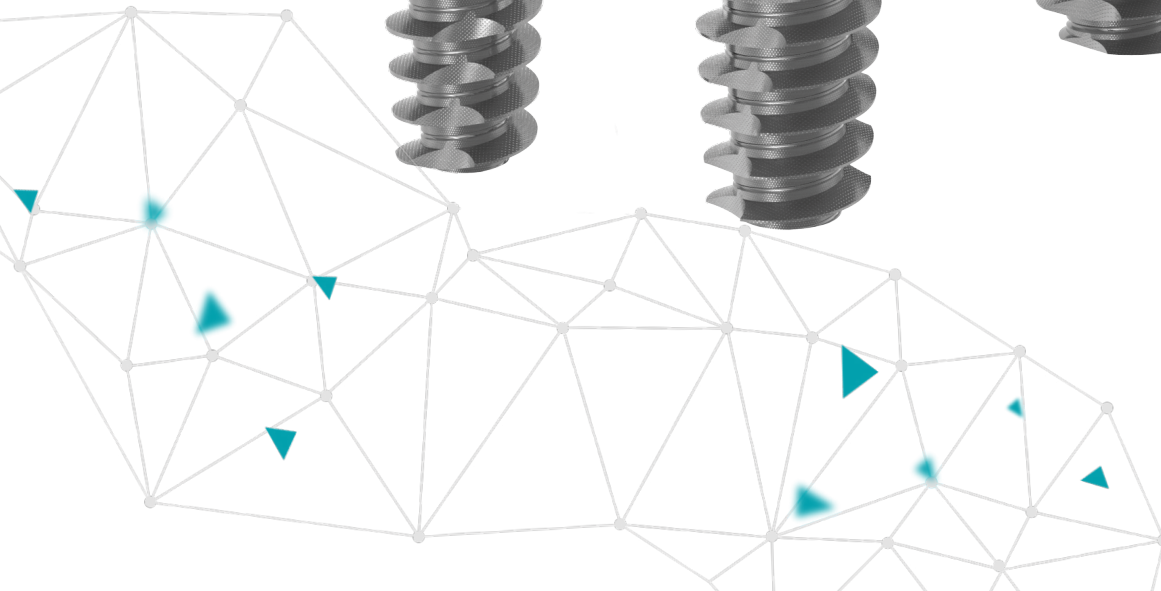




# way | extra

Aggressive, for the post-extraction



# way | extra

Way Extra satisfies the essential requirements, when **managing post extractive alveolus** with immediate implant placement:

- 1 effective penetration of the alveolar bone
- 2 achievement of elevated primary stability
- 3 adequate prosthetic components
- 4 innovative solutions



## Advantages

Designed for the rehabilitation of **post-extractive** sites with contemporaneous placement of the implant, way Extra **reduces the number of sittings** for the intervention and makes it possible to satisfy the expectations of those patients who require **shorter treatment times**.

# 1 Effective penetration of the alveolar bone

## Widely spaced threads

It allows the implant to further screw into the bone with a reduced number of revolutions, allowing for better **control on insertion**.

## Groove on the threads on the coronal upper third

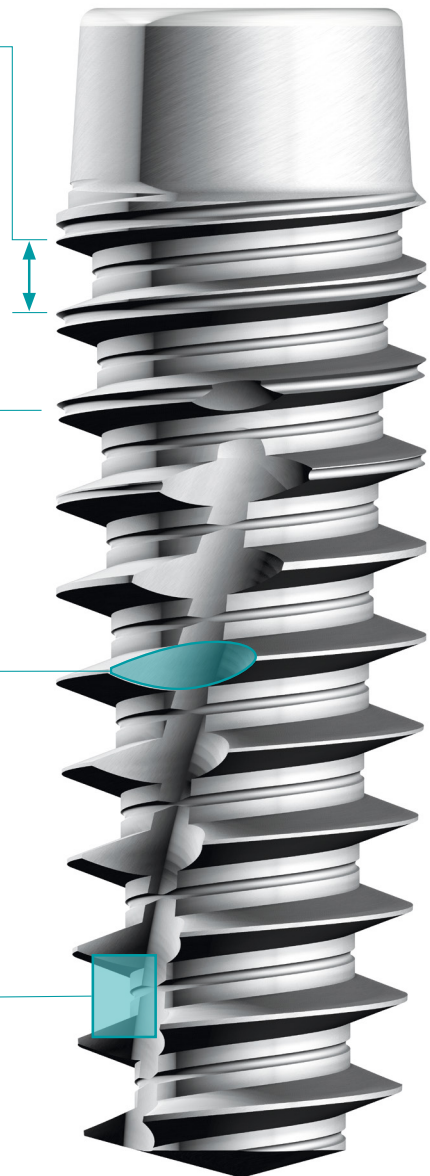
It lessens bone compression on contact and has a **greater cutting force**.

## Milling on the apical two-thirds

It considerably increases its **self-tapping potential** for the part in contact with the alveolar bone, so avoiding the use of a taper.

## Channel at the bottom of the thread

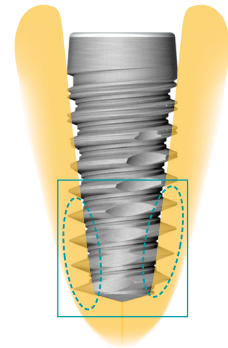
It reduces torque and so **facilitates insertion**; when healing has occurred it increases the bone-implant surface contact.



## 2 Achievements of elevated primary stability

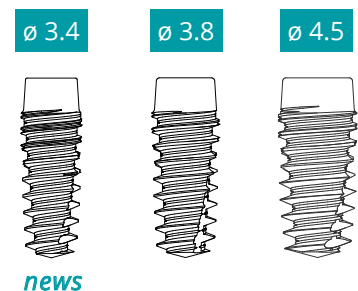
### Deep threads in the apical two-thirds

It allows the implant to **further penetrate the alveolar bone** in the post-extractive site, **increasing primary stability**.



### Wide range

**Three diameters and four lengths** (9, 11, 13, and 15 mm) to handle any clinical situation with the most suitable implant and to take adequately advantage of all the available bone.



### Slightly convergent neck

it increases the space for the formation of peri-implant bone, so that on healing there is **more bone volume** and therefore **greater support for the soft tissues**.



## 3 Effective conditioning of the soft tissues

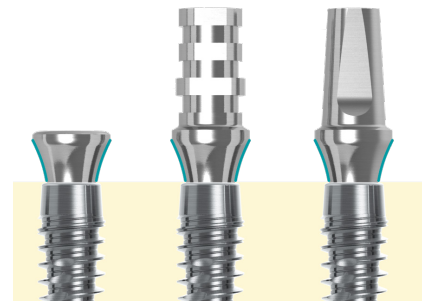
### Concave profile

Thanks to the concave profile and greater height, Aria prosthetic components allow to manage the restoration of way Extra implant in post-extractive alveolus and to correctly guide the healing of soft tissues.



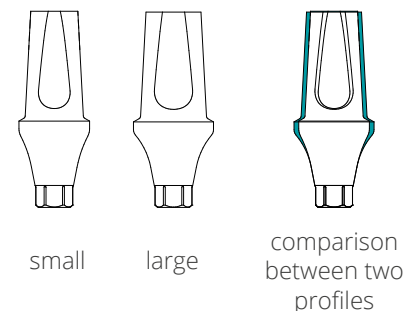
### Constant profile

For the maintenance of the esthetic profile, moulded during the healing period, the emerging geometry is reproduced in the components used throughout the entire treatment, from the initial phases through to the definitive abutment.



### Different heights

From the healing phase, the different collar heights of the abutments enable efficient conditioning of various gingival thicknesses for excellent esthetics.



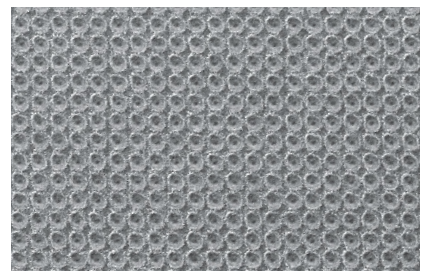
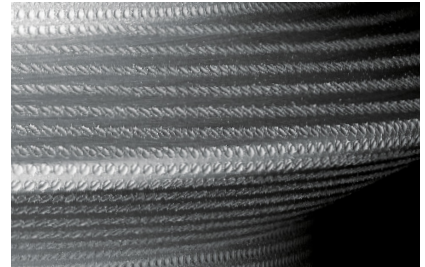
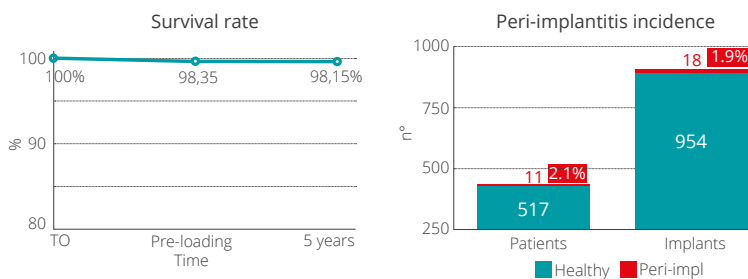
## 4 Innovative solutions

### Synthegra surface

Synthegra is the patented **laser implant surface by Geass**, which acts in two ways: it **reduces the risks of peri-implantitis infection** and, at the same time, promotes **osseointegration**.

In fact:

- it is a smooth surface, able to obstacle bacterial adhesion;
- it behaves like a rough surface, favoring osseointegration.



Multicenter retrospective clinical study , on over 500 patients treated between 2008 and 2013, with no exclusion criteria (*in publication*).

### Digital technologies

Geass is able to offer all the appropriate solutions to manage a complete **digital workflow**:

- CAD-CAM personalized prosthesis, in various typologies of Titanium, Cobalt Chrome, Zirconia, PMMA and laser melting, besides scanbodies and linkers for the bonding technique;
- instruments and accessories for guided surgery;
- analogs for digital impression taking;
- all of the libraries required by the main softwares, used by clinic and laboratory.





Geass srl  
Via Madonna della Salute, 23  
33050 Pozzuolo del Friuli (UD) Italy  
tel 0432 669191 info@geass.it  
www.geass.it

